

JOLIAN THE

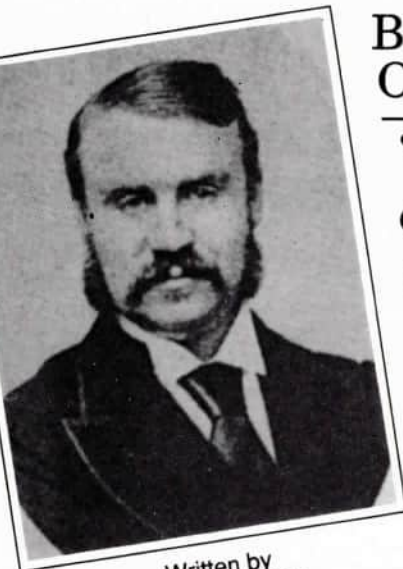


Burton & District
Operatic Society presents

Iolanthe

or The Peer and The Peri

Commencing Tuesday, 21st February,
1989 at de Ferrers High School,
Harehedge Lane, Horninglow.



Written by
W. S. GILBERT

Produced by **FRANK DORAN**
Music Directed by **PETER VERNON**
Scenic Design **JAMES GRANT**
Costumes **HOMBURG OF LEEDS**
Lighting Design **FRANCIS BATES**



Composed by
ARTHUR SULLIVAN

The Story

Date – between 1700 and 1882

The curtains open to see peris (fairies) singing and dancing. At the end of this activity they sigh over the tragic case of Iolanthe; once the life and soul of Fairyland, but banished twenty-five years earlier. Her crime – usually punished with death – was that she married a mortal.

The Fairy Queen enters, and her subjects beg her to pardon the offender. Her Majesty, who dearly loved Iolanthe, is deeply touched – especially as the penitent fairy has lived all these years at the bottom of the nearby stream, standing on her head among the frogs – and when the others fall to their knees in supplication, she relents and bids the exile come forth. Iolanthe rises from the water and humbly approaches the Queen, who pardons her and she is crowned anew with a diamond coronet.

The Queen asks why she chose to live at the bottom of the stream. Iolanthe explains she wished to be near her son, Strephon, now twenty-four and an Arcadian shepherd. He was born soon after she left her husband and Strephon is unaware of his existence.

Strephon is in love with Phyllis, a Ward in Chancery. Strephon tells his mother that, although the Lord

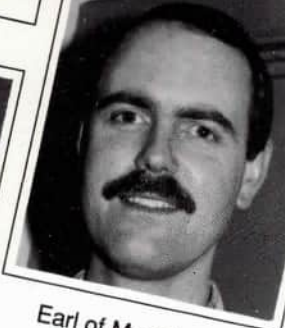
Chancellor has yet again refused his consent to their marriage, he will marry Phyllis to-day, whatever the upshot.

He is introduced to the fairies – his aunts – and tells them his fairyhood is not known to Phyllis; he has hesitated to tell her about it. Indeed, half-fairyhood is of little practical value; he can make himself invisible down to the waist, but his legs show; he has a fairy brain, but is quite stupid from the waist down; and he fears for his upper half on the day when his mortal remainder shall die. The Fairy Queen, anxious to help, remarks that with a fairy brain he should be in an intellectual sphere, and recommends that he sit for Parliament. With his Tory superstructure and Radical lower half, he will be returned a Liberal-Conservative. The fairies leave, Phyllis arrives, and Strephon and she reaffirm their decision to marry.

Now appears a Procession of Peers, singing "Loudly Let the Trumpet Bray". Their Lordships are followed by the Lord Chancellor, to whom they have applied for



The Lord Chancellor
ALAN THOMPSON



Earl of Mountararat
MIKE MORLEY



Earl Tolloller
ADRIAN BADER

Chorus of Dukes, Marquises, Earls, Viscounts, Barons and Fairies -

Bernard Anderson, John Biddle, Lindsey Biddle, Joan Burman, Joyce Burton, Mary Collingwood, Sarah Cottle, Richard Dean, Louise Evanson, Steven Foster, Kate Gibbs, Stella Hambleton, Andrew Handsaker, Ann Holmes, Robert Hughes, Carol Hussey, Mark Jones, Ron Jones, Andrew Last, Colin Lee, Sue May, Laura Miller, Barbara Roberts, Jean Rogers, Melanie Stevenson, Mike Storr, Alan Swift, Tim Thornton.

ORCHESTRA

VIOLINS James Salter (Leader), Howard Jones, Clair Booth, Nicholas Hadwen, Karen Smith, Sonia Booth. ■ **VIOLA** Anne Boulby. ■ **CELLO** Joanne Rose. ■ **DOUBLE BASS** Naomi Turner. ■ **FLUTE** Manda Williams, Kerrie Fletcher. ■ **OBOE** Tony Reynolds. ■ **CLARINET** Pat Moran, Christine Crockett. ■ **TRUMPET** Alan Booth, Charlie Pendry. ■ **HORN** Lynne Bottomley. ■ **TROMBONE** Jane Bunting. ■ **PERCUSSION** David Shipley.

PROGRAMME OF MUSIC

ACT ONE

An Arcadian Landscape

Overture

Mr. Peter Vernon and Ladies and Gentlemen of the Orchestra.

Opening - Tripping Hither, Tripping Thither

Celia, Leila and Chorus of Fairies.

Iolanthe from thy Dark Exile

Queen, Iolanthe, Celia, Leila and Chorus of Fairies.

Good-morrow, Good Mother

Strephon and Chorus of Fairies

Fare thee well, Attractive Stranger

Queen and Chorus of Fairies

Good-morrow, Good Lover

Phyllis and Strephon

None shall part us

Phyllis and Strephon

Loudly Let the Trumpet Bray

Chorus of Peers

The Law is the True Embodiment

Lord Chancellor and Chorus of Peers

My Well-loved Lord

Phyllis, Lord Tolloller, Lord Mountararat and Chorus of Peers

Nay, Tempt Me Not

Phyllis

Spurn Not the Nobly Born

Lord Tolloller and Chorus of Peers

My Lords, it May Not Be

Phyllis, Lord Tolloller, Lord Mountararat, Strephon, Lord Chancellor and Chorus of Peers

When I Went to the Bar

Lord Chancellor

When Darkly Looms the Day

Phyllis, Iolanthe, Queen, Leila, Celia, Strephon, Lord Tolloller, Lord Mountararat, Lord Chancellor and Chorus of Fairies and Peers

ACT TWO

The Palace Yard, Westminster

When All Night Long a Chap Remains

Private Willis

Strephon's a Member of Parliament

Chorus of Fairies and Peers

When Britain Really Ruled the Waves

Lord Mountararat and Chorus

In Vain to us You Plead

Leila, Celia, with chorus of Fairies, Lord Mountararat and Lord Tolloller

Oh, Foolish Fay

Queen, with Chorus of Fairies

Tho' p'r'aps I May Incur Your Blame

Phyllis, Lord Tolloller, Lord Mountararat and Private Willis

Love Unrequited Robs me of my Rest

Lord Chancellor

He Who Shies at Such a Prize

Lord Tolloller, Lord Mountararat and Lord Chancellor

If we're Weak Enough to Tarry

Phyllis and Strephon

My Lord, a Suppliant at Your Feet

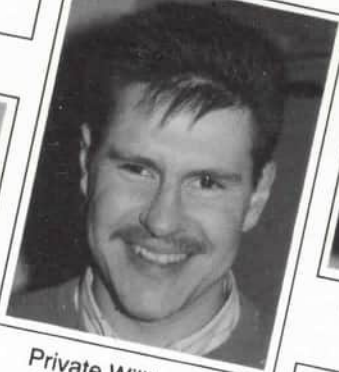
Iolanthe

It May Not Be

Iolanthe, Queen, Lord Chancellor and Fairies

FINALE - Soon as we May, Off and Away

Phyllis, Iolanthe, Queen, Leila, Celia, Lord Tolloller, Lord Mountararat, Strephon, Lord Chancellor and Chorus of Fairies and Peers



Private Willis of the Grenadier Guards
ANDREW LAST



Queen of the Fairies
SALLY McINNES



Fleta (Fairy)
JANE SAVAGE



Strephon
Arcadian Shepherd
EL HAYWOOD



Celia (Fairy)
LINDA KEMP



Phyllis (an Arcadian
Shepherdess and Ward in
Chancery)
SALLY HAMBLING



Leila (Fairy)
BETTY BOOTH

There will be an interval of 20 minutes between ACT ONE and ACT TWO during which coffee and wine will be served.

First performed at the Savoy Theatre, London,
on 25th November, 1882, conducted by Sullivan.
Initial run of 398 performances.

Would you like to become a Patron? If interested, please contact –
Mrs. Louise Evanson, 85 Kitling Greaves Lane, Burton-on-Trent.
(Burton 43240) who will give you further information.

ACKNOWLEDGEMENTS

The Committee, on behalf of the Society, wishes to express its grateful thanks to –
de Ferrer's High School
Dean & Smedley – Chemists
Ind Coope Burton Brewery
Marstons Brewery
The Staffordshire Education Committee
Tony Gaskin - The Beacon Hotel
and to anyone else who helped to make "Iolanthe" a success – Thank you.

We extend our sincere thanks to you, our audience, for your continued support of our productions.

The audience is respectfully requested not to smoke in the auditorium.

The Society cannot accept responsibility for any articles left in the cloakroom.

adjudication in the matter of his ward, Phyllis. They, too, love the girl – all of them – and he must consent to give her to whichever of them she selects. As it happens, the Chancellor himself loves her, but can scarcely give his own consent to his own marriage with his own ward. On the other hand, should he marry her without his consent, he commits contempt of court.

Summoned, Phyllis declares her love for Strephon. Strephon arrives and claims that she is his by Act of Nature's Parliament. The Lord Chancellor, however, cannot accept the validity of such an Act because of his strong sense of duty – a quality which he extols in a song, "When I Went to the Bar".

Iolanthe, seeing Strephon in tears, hastens to his side. Phyllis, unable to believe that this young and beautiful creature is his mother, draws other conclusions, and offers her heart to the Peers. Strephon calls on the fairies to help, and they promptly appear, led by the Fairy Queen herself, who decrees that Strephon shall enter Parliament, where, backed by a large majority, he will possess the gift of being able to pass whatever bills he likes.

Act 11 opens with Private Willis on sentry duty at Westminster. He sings "When All Night Long" – the fairies enter, and rejoice that "Strephon's a Member of Parliament". The Peers come from Westminster Hall echoing this less joyously, for Strephon is now introducing a Bill which will throw the Peerage open to Competitive Examination! The fairies find these gentlemen utterly captivating, but the Fairy Queen reminds them that it is death to marry a mortal. Their weakness may be strong, but it must be subdued. She, herself, is not insensible to the manly beauty of Private Willis, he has the most extraordinary effect on her; but, as she explains in "Oh, Foolish Way", she resists the temptation.

The fairies leave, and Phyllis arrives. She is miserable without Strephon, and is now engaged to two earls. They consider a duel to determine who shall marry her, but decide to urge the Lord Chancellor to press his own suit.



Iolanthe
A Fairy, Strephon's mother
ANGELA WYNNE

The gentleman, sleepless with unrequited love – "When You're Lying Awake" – agrees with their view. But now Phyllis and Strephon have met again, and the new M.P. has convinced Phyllis that Iolanthe is indeed his mother, that she is a fairy, and that he is a half a fairy. All is made well again, and they will marry at once. They beg Iolanthe to intercede with the Lord Chancellor. She confesses, very agitated, that the Lord Chancellor is her husband – Strephon's father! His Lordship believes that she died, childless, and she is under pain of death not to undeceive him.

The Lord Chancellor appears, Iolanthe unveils herself, and pleads Strephon's cause – "My Lord, a Suppliant at Your Feet". He recognizes her, and, realising that she has broken her vow, she waits for death. Outside, the fairies wail.

They enter, led by the Fairy Queen, who bids Iolanthe to prepare to meet her doom. The Peers and Private Willis appear and the fairies ask their Queen to stay her hand – for they have all become fairy duchesses, countesses and the like. The Queen is at a loss, she can scarcely slay the whole fairy company, when the Lord Chancellor, by the insertion into the Fairy Bill of a single word, subtly alters the fairy law so that it condemns only fairies who DON'T marry mortals.

Now, all is well, Strephon has his Phyllis, the Chancellor has Iolanthe, and the fairies their Peers. To save her own life, the Fairy Queen is united to Private Willis. She now changes all the mortals into fairies, and commands them to be off with her to Fairyland – "Soon As We May". The House of Peers is now the House of Peris.

HONORARY OFFICIALS

President of the Society
Terry Hickman, Esq.

Honorary Vice-Presidents
Peter Duffield, Esq. D.F.C.
Len Harvey, Esq.

Robert Smith, Esq., Jim Thornley, Esq.

Honorary Life Members
Miss Lily Brunning, Mrs. Glenise Blant
Jack Copeland, Esq., Mrs. Effie Shorthose
Alan Thompson, Esq.
Mrs. Mabel Whiteland

Chairman
Keith Dadley

Vice-Chairman
Joy Appleby

Secretary
Joycelyn Hickman,
"Four Winds" Anslow

Committee
Betty Booth, Richard Dean
Nigel Haywood, Barbara Roberts
Jean Rogers, Reg Yates

Treasurer
Robert Hughes

Patron Secretary
Louise Evanson

House Manager
Jack Last

Assistant House Manager
John Goodhead

Performance Secretary
Vicky Biddle

Producer
Frank Doran

Musical Director
Peter Vernon

Assistant Musical Director
Bert Herbert

Accompanist
Vic Benson

Continuity
Vicky Biddle

Stage Director
David Hussey

Stage Manager
Tim Goodhead

Lighting Design
Francis Bates

Lighting Board
Keith Dadley, Michael Thompson

Scenic Design
James Grant

Scenic Artists
Eileen Richmond, Pete Spalding,
Chris Yardley

Scenery Construction & Stage Staff
John Burton, Linden Harvey,
Philip Hulbert, John Jackets,
Denise Haywood, Graham Lewin,
Martin Louch, Richard George,
Sally-Ann Yeomans

Properties
Jo Bradford, Ruth Brearley,
Amanda Chester, Linden Harvey,
Sally-Ann Yeomans

Wardrobe Mistress
Joy Appleby

Wardrobe Assistants
Lily Brunning, Audrey Hackett,
Ruth Skellett, Sheila Webber

Prompt
Jan Caldwell

Call Boy
Joycelyn Hickman

Publicity
Sheila Webber

Programme Secretary
Jean Last

Programme Design
James Grant

Photography
James Grant

Social Secretary
Betty Booth

Front of House Display
James Grant

Front of House Staff
David Blant, Glenise Blant, Jane Dawn,
John Evans, Joyce Evans,
Elsie Goodhead, Jan Goodhead,
Vi Harris, Molly Kidger, Jean Last, Vi
Leete, Stella Reynolds,
Effie Shorthose, Annette Smith,
Marie Thompson, Pam Woodcock,
John Woodcock, Mabel Whiteland

The Society welcomes new members – if interested please 'phone the secretary on Burton 812552 or write to Mrs. Joycelyn Hickman, "Four Winds", Anslow, Burton upon Trent.

Proceeds from this show will be given to the British Kidney Patients Association. One of our members, Andrew Handsaker, has been helped by, and supports, this Association.

The audience is requested not to use flash photography during the performance.

The Society is affiliated to the Burton Arts Council and the National Operatic and Dramatic Association. Amateur performances by arrangement with Chappell Music Ltd.

